

### **Sega Nomad Screen Protector Replacement Guide**

Thank you for purchasing a replacement Sega Nomad screen protector from Mortoff Games. This guide is designed to guide you through the various steps involved in the installation of this repair part. If at any time you have questions please feel free to email us at [customerservice@mortoffgames.com](mailto:customerservice@mortoffgames.com)

#### **Things you will need:**

- Sega Nomad Screen Protector
- Philips screw driver of the appropriate size (Recommend size P0)
- 4.5mm Nutsetter security screw bit, long size
- Can of compressed air (The type used for computers and other electronics)
- Clean work area (preferably one where little screws will not get lost)
- About 10-15 Minutes of free time

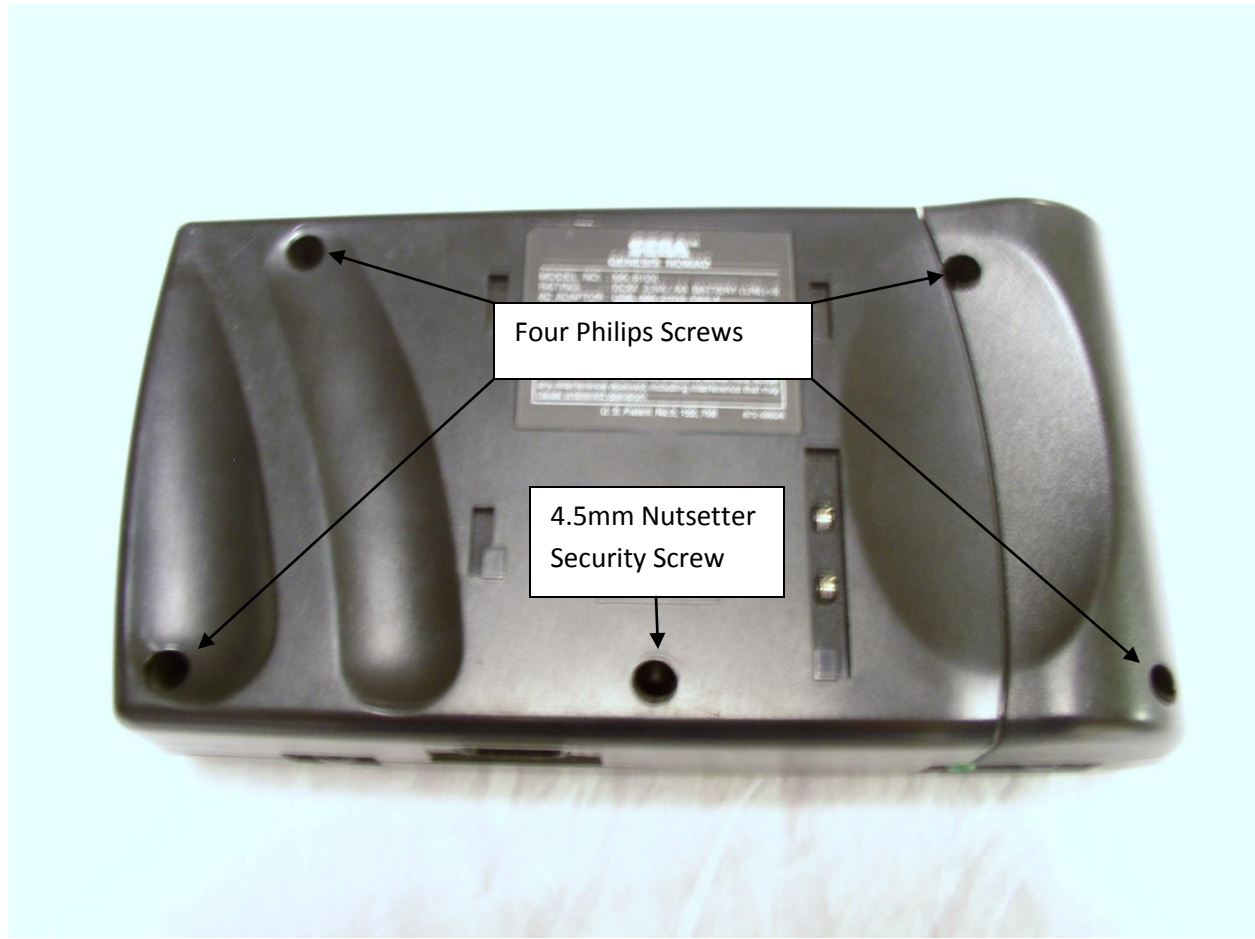
#### **Please Read**

There are several ways of replacing your screen protector. This guide covers the most time consuming, although the one least likely to result in cosmetic damage to your system. If you would prefer to use a less time consuming method we recommend the following, although understand they may lead to damage to your system. This being started however the technical complexity of opening your system to replace the screen protector does require skill, time and patience. It is recommended that you read through the guide before choosing a repair method.

- 1) Get a plastic hook and super glue it to the front of the screen protector. Once it is bonded use it to pry the old screen protector off. Once finished use duster spray to clean off the LCD screen and then apply the new screen protector. Once it is attached remove the semi-transparent film on the front of the screen protector and you are ready to go.
- 2) Using a flat head screw driver pry off the old screen protector. Once finished use duster spray to clean off the LCD screen and then apply the new screen protector. Once it is attached remove the semi-transparent film on the front of the screen protector and you are ready to go.

**Step One:**

To start please flip over the unit and locate the five case screws. Please see picture one below



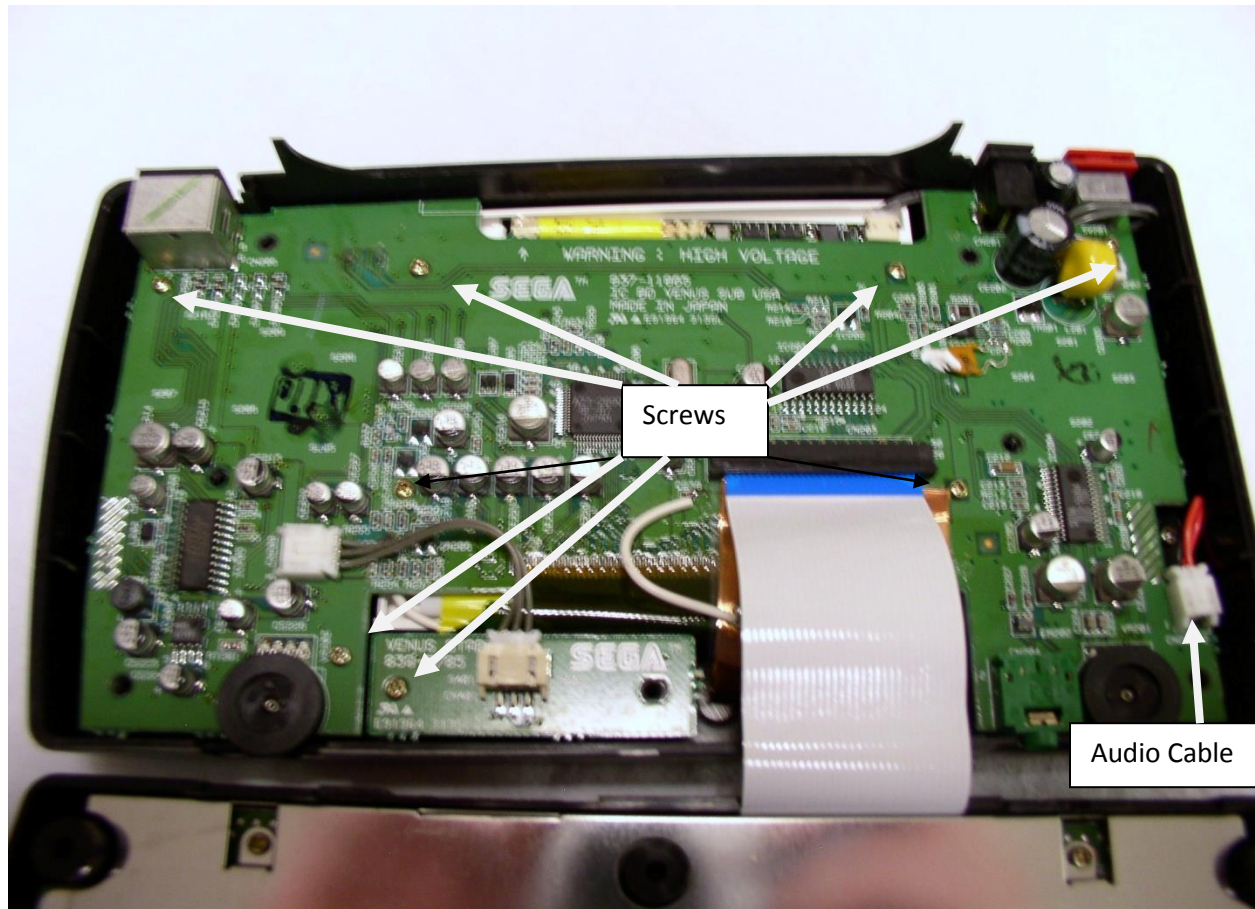
Picture One: Back side of the Sega Nomad

Using the proper size Philips screw driver, unscrew the four Philips screws. If the screw driver is slipping when you are unscrewing the screws, this is an indication that you could be using the wrong size. Afterwards using a long 4.5mm Nutsetter security screw bit, unscrew the security screw. Forcing a short 4.5mm Nutsetter screw bit into the hole most likely will damage your casing. Please proceed to step two.

**Step Two:**

Once you have removed all of the screws, flip the unit over and gently shake the screws out. Those that do not come out most likely need additional unscrewing. Once done carefully separate the two halves of the casing. There is a cable that connects the two halves of the unit internally that you want to be careful not to yank by pulling the case apart too quickly or forcefully.

Once completed locate the eight screws holding down the screen to the casing. Your unit may have less or more screws depending on the model. Please see picture two below.

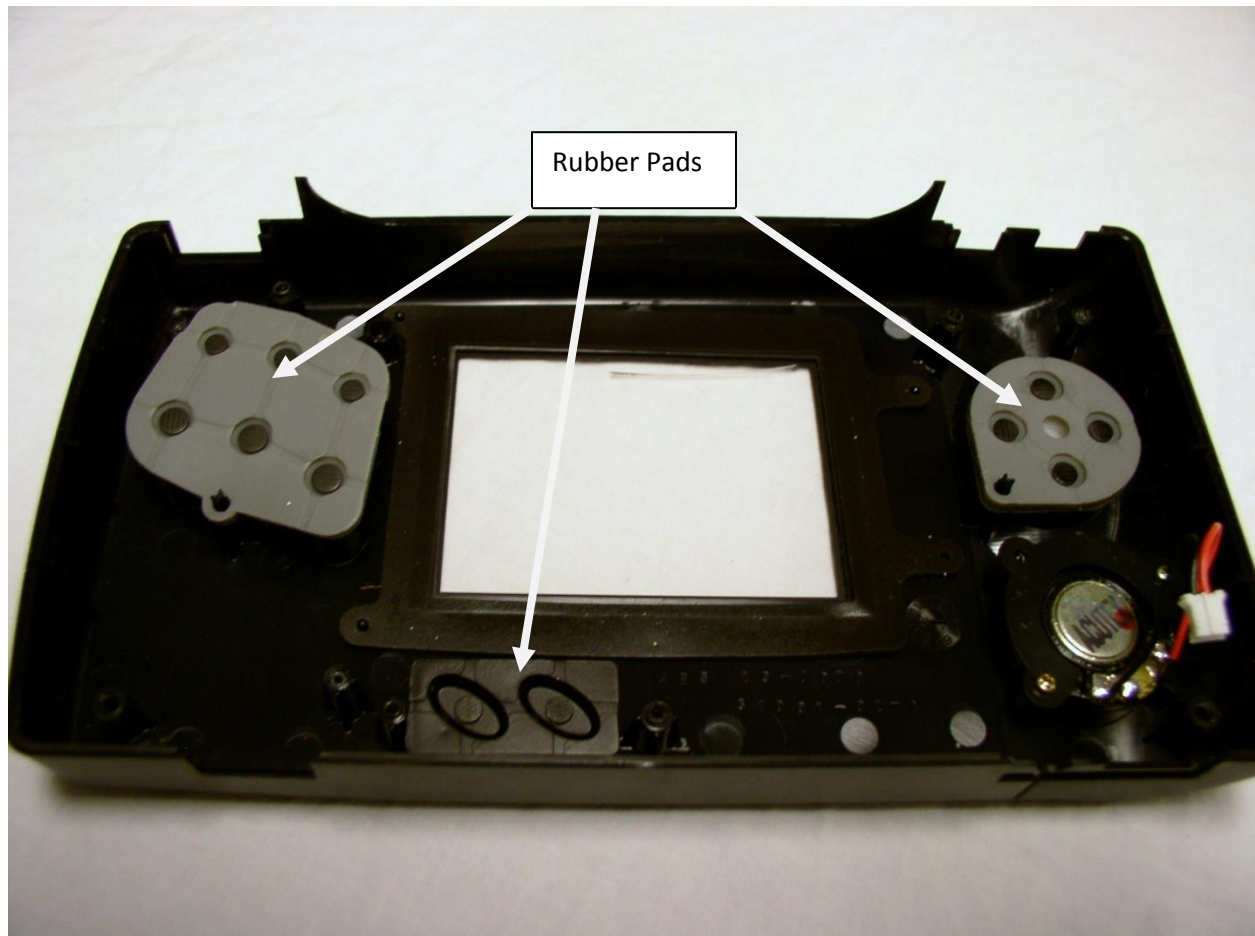


Picture Two: Internals of the Sega Nomad

Unscrew the screws holding down screen to the casing. When removing the screws note which holes they went into. There are more holes than screws and they need to be screwed back into their proper place for the case to close properly. Afterwards locate the audio cable, please see picture two above. Gently grasping the top of the cable, unplug it. Once done carefully separate the screen from the casing, if there is resistance check for additional screws before proceeding.

**Step Three:**

Once the screen has been separate from the casing your system should now look like picture three below. Please be careful with the screen as it will scratch easily and replacement screens are not made. Do not clean it with a rag or paper towels as will leave scratches on the screen, which are highly noticeable during play.



Picture Three: Mother board removed

For this next part place your thumbs against the inside of the screen protector and press outwards. These screens are well glued to the system and are hard to remove. It is recommended that you exert pressure on one side of the screen protector at a time. After the screen protector begins to peel away from the system you can physically grasp the screen protector and pull it away.

**Do not install the replacement screen protector yet.**

**Continued on next page**

**Step Three Continued:**

Next we recommend that you take the time to clean the buttons and the associated rubber conductive pads with soap and water. This will improve their functionality. Once dried please insert them back into the case. When installing the rubber conductive pads please make sure they are directly under the buttons. If they are offset your buttons will not work properly when you reassemble the system forcing you to disassemble it again to fix the problem.

Now go ahead and reassemble your system making sure that the screws holding down the mother board are inserted into the proper holes. Please see step two for further assistance.

Once the system is reassembled using the can of compressed air please remove any dust from the LCD screen. This dust will be extremely noticeable when you play your game and you want to ensure that you remove it all before reassembling your system. Once the dust has been properly removed please remove the adhesive backing from the screen protector and install it. Once inserted please remove the thin semi-transparent film on the front of the cover.

If you have any problems with your system after you reassemble it please see our troubleshooting section or contact us via email at [Starwander@Comcast.net](mailto:Starwander@Comcast.net)

### **Troubleshooting Section**

This part of the guide is intended to assist you with troubleshooting possible problems that can arise due to this repair. If you have any questions please feel free to contact us via email at [customerservice@mortoffgames.com](mailto:customerservice@mortoffgames.com). Please select the problem that sounds most similar to the one you are experiencing.

**1) I don't hear any audio.**

- a. Did you plug back in the audio cable? Open up the unit and check. If you did check to see if the cable is still soldered to the contacts on the speaker. If they are not they will have to be soldered back on

**2) My buttons don't work.**

- a. Open up the system and check to make sure that rubber pads are directly over the buttons. If not realign them to their proper position.