

### **GameBoy Original Screen Protector Replacement Instructions**

Thank you for your purchase of a GameBoy Original Replacement Screen Protector from Mortoff Games. If at any time during the course of these instructions you have questions, please do not hesitate to contact us at [customerservice@mortoffgames.com](mailto:customerservice@mortoffgames.com) for assistance. We are more than happy to answer any and all questions you might have.

#### **Things you will need**

- GameBoy Original Replacement Screen Protector
- Small Philips screwdriver
- Can of compressed air
- A clean work area where small screw will not get lost
- Approximately 10 minutes of free time

#### **Things you might need**

- Tri-Wing screw driver (Discussed below)

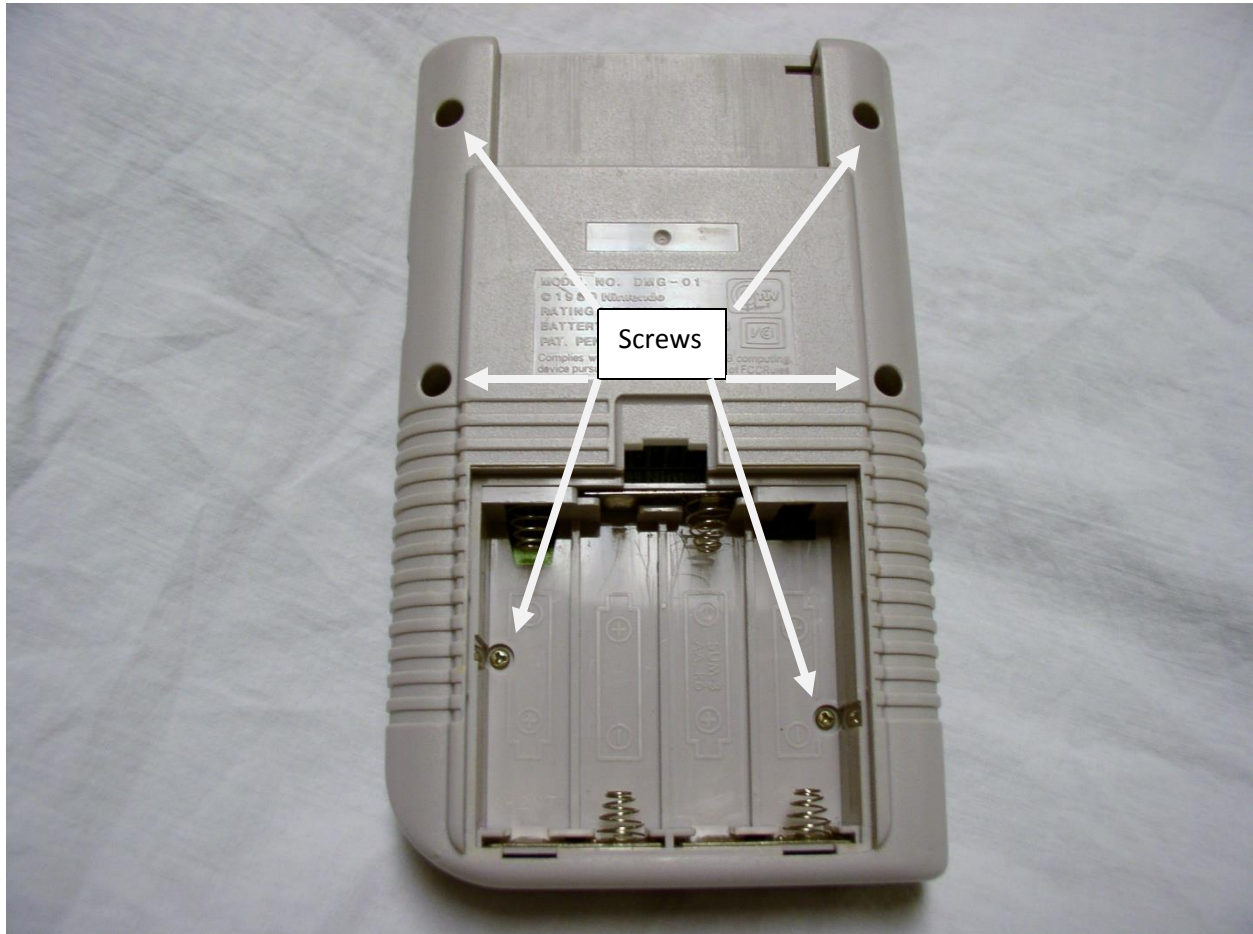
#### **Please Read**

There are several ways of replacing your screen protector. This guide covers the most time consuming, although the one least likely to result in cosmetic damage to your system. If you would prefer to use a less time consuming method we recommend the following, although understand they may lead to damage to your system.

- 1) Get a plastic hook and super glue it to the front of the screen protector. Once it is bonded use it to pry the old screen protector off. Once finished use duster spray to clean off the LCD screen and then apply the new screen protector. Once it is attached remove the semi-transparent film on the front of the screen protector and you are ready to go.
- 2) Using a flat head screw driver pry off the old screen protector. Once finished use duster spray to clean off the LCD screen and then apply the new screen protector. Once it is attached remove the semi-transparent film on the front of the screen protector and you are ready to go.

**Step One:**

To start please turn over the unit and remove the battery cover. Then locate the six casing screws as seen in picture one below.



Picture One: Back side of the GameBoy Original System

Nintendo used two types of screws to hold together the GameBoy Original system. The earlier models used Philips screws while the later models used triwing security screws. If the screws don't look like Philips screws then they are tri-wing screws. You will need a triwing security screw driver in order to unscrew them. These can be found on our website. Once you have the appropriate tool for the job please go ahead and unscrew the casing screws.

**Step Two:**

Once the casing screws are removed you are ready to separate the two halves of the casing. Please go ahead and slowly separate the two halves of the case. If there is resistance this is an indication that one or more of the screws still need to be loosened. Once the casing halves start to separate you will notice a cable connecting the two circuit boards as seen in picture two below.

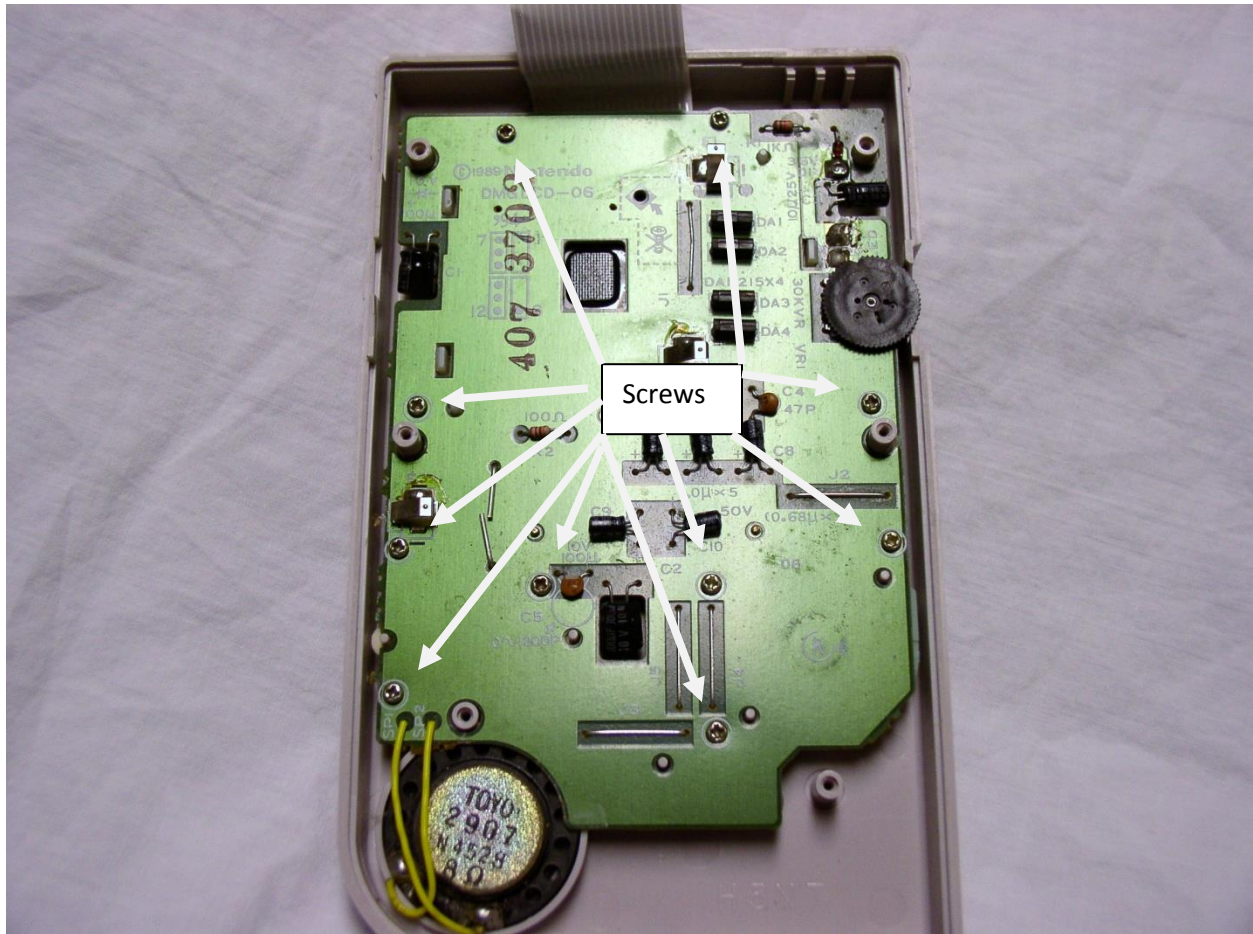


Picture Two: LCD Ribbon Cable

In order to disconnect this cable gentle pull the cable in the direction of the arrow on the picture above.

**Step Three:**

Once the cable is disconnected please place the back side of the GameBoy Original to the side as we are only interested in the front side of the system. Please locate the ten screws holding down the circuit board as seen in picture three below and unscrew them. Some versions of the system may have more or less screws.

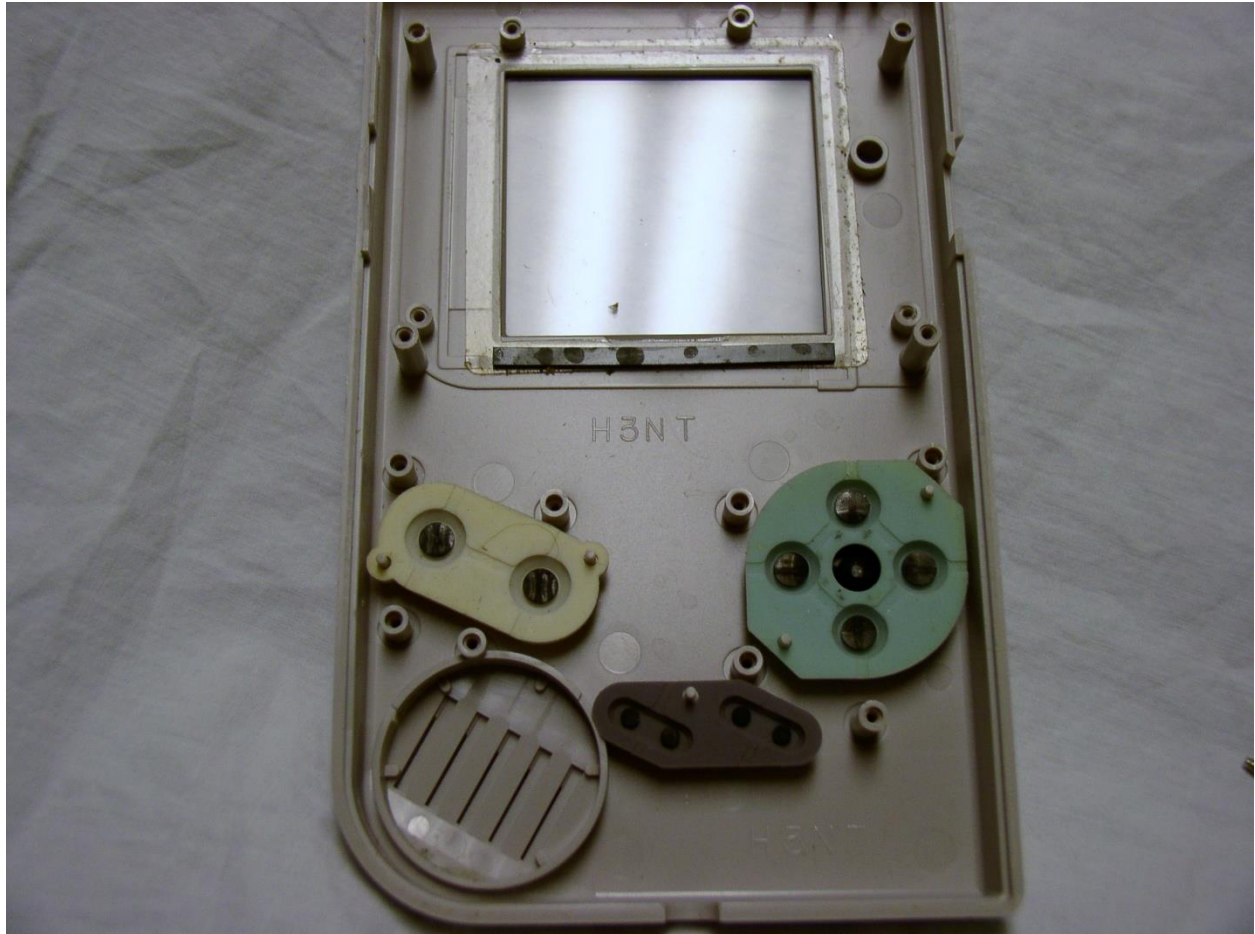


Picture Three: Removing the ten screws



**Step Four:**

Once you have unscrewed all of the screws holding down the front circuit board please separate the board from the casing by pulling upwards on the board. It might require a little bit of force as sometimes they can be stuck. Once you have the circuit board removed your system should look like picture four below.



Picture Four: Screen protector accessed

Before you replace the screen protector this is an excellent opportunity to clean out your system. We recommend that you take the time to clean the rubber conductive pads and the buttons with soap and water. This will improve their functionality. Once you are done cleaning your system you are ready to remove the old screen protector.

Taking your thumbs apply equal pressure to the screen protector from both sides. Continue to press until the screen protector comes off. It will require a bit of brute force, although it will come off.

**\*\*\*Important\*\*\*** Do not apply the replacement screen protector yet. Wait until the system is fully reassembled first. Please read the remaining instructions.

You will notice that there is some residual glue on the casing from the old screen protector. It is recommended that you scrap away as much as you can. Afterwards re-assemble your system taking care not to pinch the wires leading from the mother board to the speakers. They are surprisingly fragile and if they are damage it will require soldering to fix them. A little care here will save a ton of time later on.

Once the system is fully reassembled take some duster spray and spray off the LCD screen. Make sure there isn't any visible dust on the screen, since even small particles will be extremely noticeable when the system is turned on. So don't be stingy with the duster spray. Once the LCD screen is spotless remove the backing of the replacement screen to reveal the sticky side. Attach the sticky side to the casing. Finally remove the semi-transparent film on the front of the screen protector and presto you are finished.

If after you reassemble your system you find that your system no longer works properly please see the Technical Help Section at the end of this guide.

### **Technical Help Section**

Please find the problem that is closest to the one that you are experiencing. At any time please feel free to contact us for assistance at [customerservice@mortoffgames.com](mailto:customerservice@mortoffgames.com)

**1) My screen no longer works**

- a. The cable seen in picture two may not be properly hooked up. Please re-open your system and ensure the cable is indeed reconnected.

**2) I no longer have any sound**

- a. There are two wires connected to the speaker. These wires can sometimes become damaged with handling. Please disassemble your system and check the wires to ensure they are indeed connected and not cut; if they are cut or disconnected you will need to resolder them back on.

**3) There is dust on my screen**

- a. This will happen if duster spray was not used prior to attaching the screen protector. You will have to repeat the entire process and to buy another screen protector.

**4) My screen looks all cloudy, scratched up or otherwise bad**

- a. Did you remove the plastic covering on the front of the screen? It is a thin film that you remove after installation.