

GameBoy Color Replacement Screen Protector Installation Guide

Thank you for your purchase of a GameBoy Color replacement screen protector from Nintendo Repair Hut. This guide will guide you through the steps of installing your new purchase. If at any time you have questions please feel free to contact us at Starwander@Comcast.net for assistance.

Things you will need:

- GameBoy Color Replacement Screen Protector
- Tri-wing screwdriver
- Small Philips head screwdriver
- Small flathead screwdriver
- Can of compressed air (The type used to clean out electronics)
- A clean working area where small screws will not get lost
- 10-15 Minutes of free time

Please Read

There are several ways of replacing your screen protector. This guide covers the most time consuming, although the one least likely to result in cosmetic damage to your system. If you would prefer to use a less time consuming method we recommend the following, although understand they may lead to damage to your system.

- 1) Get a plastic hook and super glue it to the front of the screen protector. Once it is bonded use it to pry the old screen protector off. Once finished use duster spray to clean off the LCD screen and then apply the new screen protector. Once it is attached remove the semi-transparent film on the front of the screen protector and you are ready to go.
- 2) Using a flat head screw driver pry off the old screen protector. Once finished use duster spray to clean off the LCD screen and then apply the new screen protector. Once it is attached remove the semi-transparent film on the front of the screen protector and you are ready to go.

Step One:

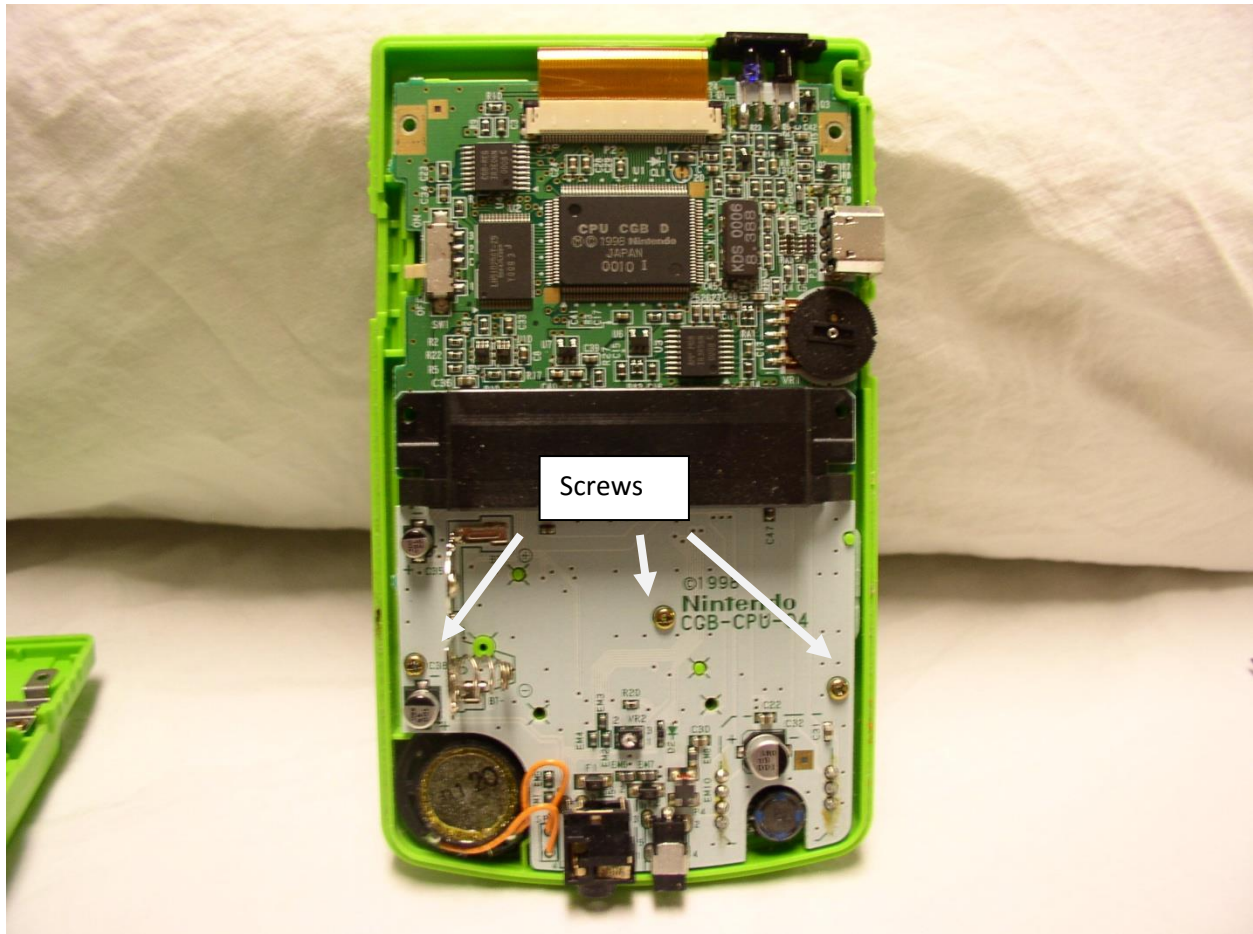
To start please remove the battery cover and find the six screws holding the casing together as seen in picture one below. These six screws are triwing security screws and require a triwing screwdriver to remove them. If you do not have one they are available on our website.



Picture One: Back side of the GameBoy Color

Step Two:

Once you have removed the six casing screws take the two halves of the GameBoy Color in your hands and gently separate the two casing halves. If you feel resistance this is most likely due to one or more screws needing additional loosening. Once you have the system open it should look like picture two below.

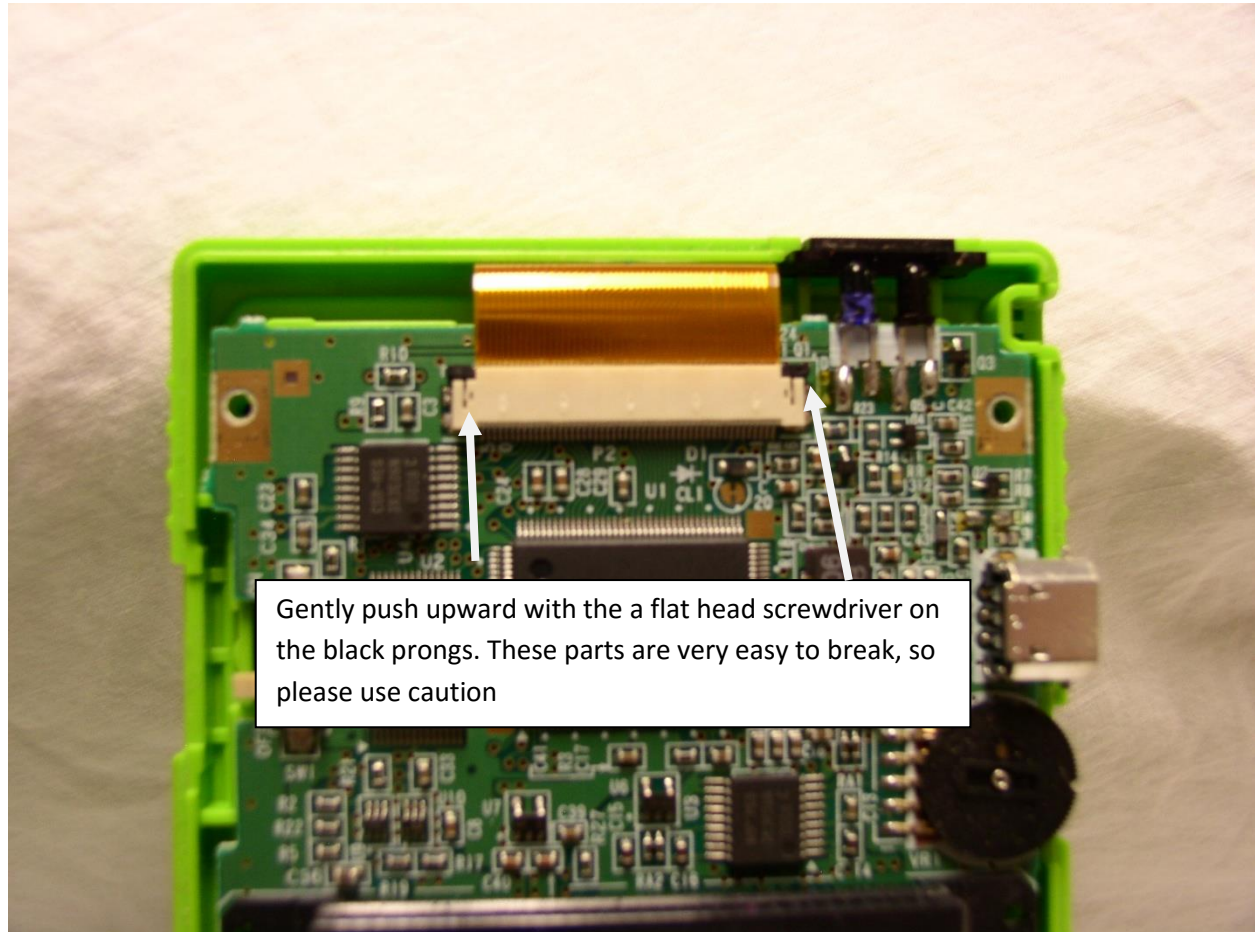


Picture Two: First stage of disassembly

Locate the three screws (this number may vary) holding down the mother board and unscrew them. Once finished please proceed to step three.

Step Three:

Once the screws are removed locate the ribbon cable at the top of the mother board as illustrated in picture three below.



Picture Three: Ribbon cable removal

Locate the two black prongs on either side of the port holding the ribbon cable in place. Take a flathead screw driver and gently push upwards to pop these prongs upward. Please use caution as they are rather easy to break and cannot be easily replaced. Once you have popped up the black prongs the ribbon cable should easily come out of the port. Do this now. After the cable has been disconnected please remove the mother board from the casing and proceed to step four.

Step Four:

This next step can be a bit tricky as it requires some finesse, although it can easily be done with some patience. As seen in picture four below the only thing standing between you and the screen protector is the LCD screen.

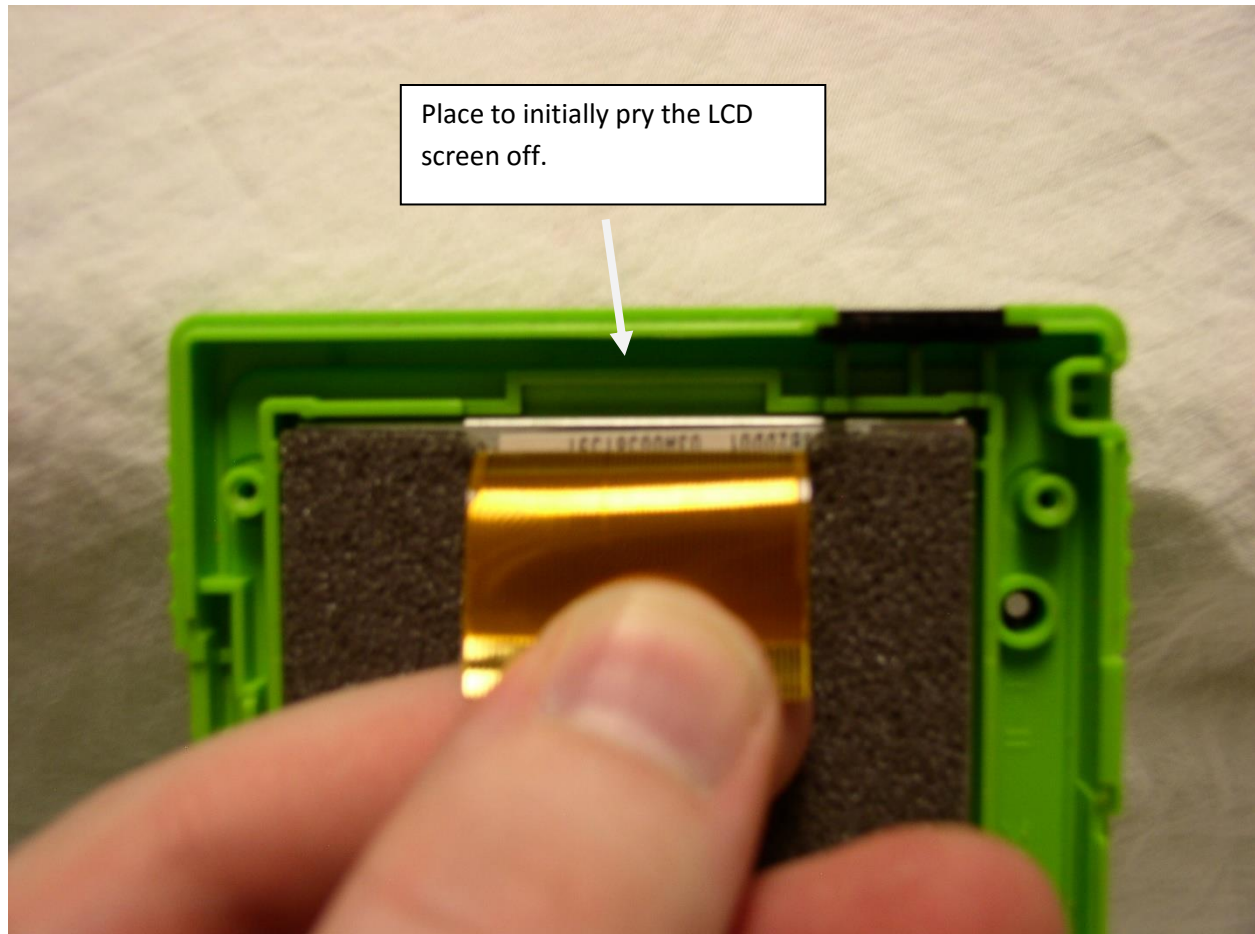


Picture Four: LCD screen

Step four is continued on the next page.

Step Four Continued:

Get out your flathead screwdriver and grab the ribbon with your other hand. Gently pull the ribbon down and expose the area seen in picture five below.



Picture Five- Removing the LCD screen

Next you will use your screwdriver to remove the LCD screen; however it is important to know that around the front of the LCD screen (the part you see when playing a game), there is a thin metal strip. The goal is to insert your flathead screwdriver into the groove noted above and make contact with the thin metal strip on the front of the LCD screen. I know this sounds somewhat confusing, although what I am attempting to get at is if you are too aggressive you will scratch the LCD screen, basically ruining it. Patience will pay off big on this stage of the installation.

Once you have started to pry the screen off, follow around the edge as you remove the screen. Eventually you will have it out. Be very careful where you set the screen as it will scratch extremely easily and once you scratch it is practically ruined.

Step Five:

Now that you have the LCD screen removed your system should look like picture six below.



Picture Six- So close to being finished

Securely hold the case in your hands and press the screen protector outwards until it separates from the casing. After it is removed do not install the replacement screen protector yet. First there are other things that need to be done. We recommend that you take the time to clean the buttons and the rubber pads underneath them at this time. Doing so will improve their function and to help avoid problems down the roads. You can use soap and water or other kitchen cleaners

Once they have been cleaned go ahead and reassemble the system, although do not install the screen protector yet. When reassembling the system take care when placing the stereo speaker. It will only correctly fit in one direction; therefore if it is not fitting, this is because it is not oriented correctly. Simply reorient it, until it fits into its hole.

Once the entire system has been reassembled take the can of compressed air and spray the LCD screen removing all dust. Even one speck of dust will be incredibly noticeable during game play; therefore

overkill is better in this situation. Once you have removed all the dust install the replacement screen protector. Then remove the semi-transparent protective film on the screen protector.

If you experience problems with your system after installing this screen protector please see the technical support section at the end of this guide.

Technical Support Section

While we hope that the installation of your screen protector was without complications, things sometimes happen. This guide will help you through correcting the most common problems that occur when installing this part, although if you should require additional help we are more than happy to answer your questions at Starwander@Comcast.net. Please read through the statements and select the problem most similar to yours

1) My sound doesn't work

- a. Most likely the cable to your stereo was cut when the system was being reassembled. You will have to disassemble the system to check for sure. If you find the cable(s) is/are cut they will have to be re-soldered back together. If the cables are intact the speaker itself is most likely defective

2) My screen looks all cloudy, scratched up or otherwise bad

- a. Did you remove the plastic covering on the front of the screen? It is a thin film that you remove after installation.

3) My button(s) do not work

- a. Most likely this is due to them being improperly situated or dirty. Either way you will need to disassemble the system. Once it is apart clean the parts if you have yet to do so and then properly align them in their holes. They will appear to fit correctly when they are properly situated

4) There is dust on my screen

- a. This will happen if duster spray was not used prior to attaching the screen protector. You will have to repeat the entire process and to buy another screen protector.