

### **GameBoy Advance Replacement Screen Protector**

Thank you for your purchase of a GameBoy Advance replacement screen protector from Mortoff Games. We appreciate your business and look forward to working with you again. This guide will take you through the steps of installing your replacement screen protector. If you have questions at any time please don't hesitate to contact us at [customerservice@mortoffgames.com](mailto:customerservice@mortoffgames.com).

#### **Things you will need:**

- GameBoy Advance Replacement Screen Protector
- Tri-wing screw driver
- Small Philips head screw driver
- Screw flat head screw driver
- Can of compressed air (The type used to clean out electronics)
- Clean work area where small screws and parts will not get lost.
- About 15-30 minutes of spare time

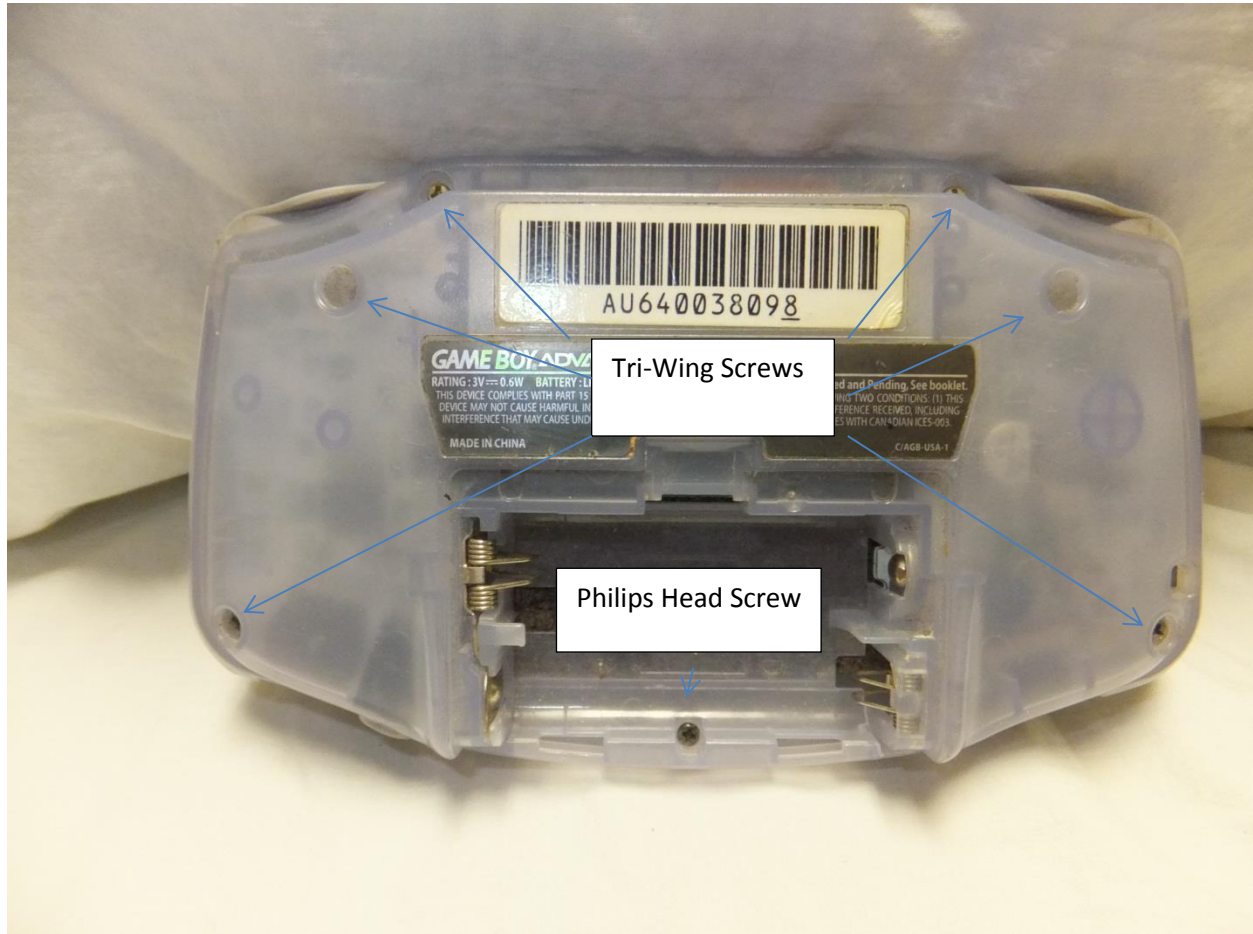
#### **Please Read**

There are several ways of replacing your screen protector. This guide covers the most time consuming, although the one least likely to result in cosmetic damage to your system. If you would prefer to use a less time consuming method we recommend the following, although understand they may lead to damage to your system.

- 1) Get a plastic hook and super glue it to the front of the screen protector. Once it is bonded use it to pry the old screen protector off. Once finished use duster spray to clean off the LCD screen and then apply the new screen protector. Once it is attached remove the semi-transparent film on the front of the screen protector and you are ready to go.
- 2) Using a flat head screw driver pry off the old screen protector. Once finished use duster spray to clean off the LCD screen and then apply the new screen protector. Once it is attached remove the semi-transparent film on the front of the screen protector and you are ready to go.

**Step One:**

To start please flip your GameBoy Advance over and locate the six triwing screws and the one Philips head screw that are holding down the back casing. Once located unscrew them.

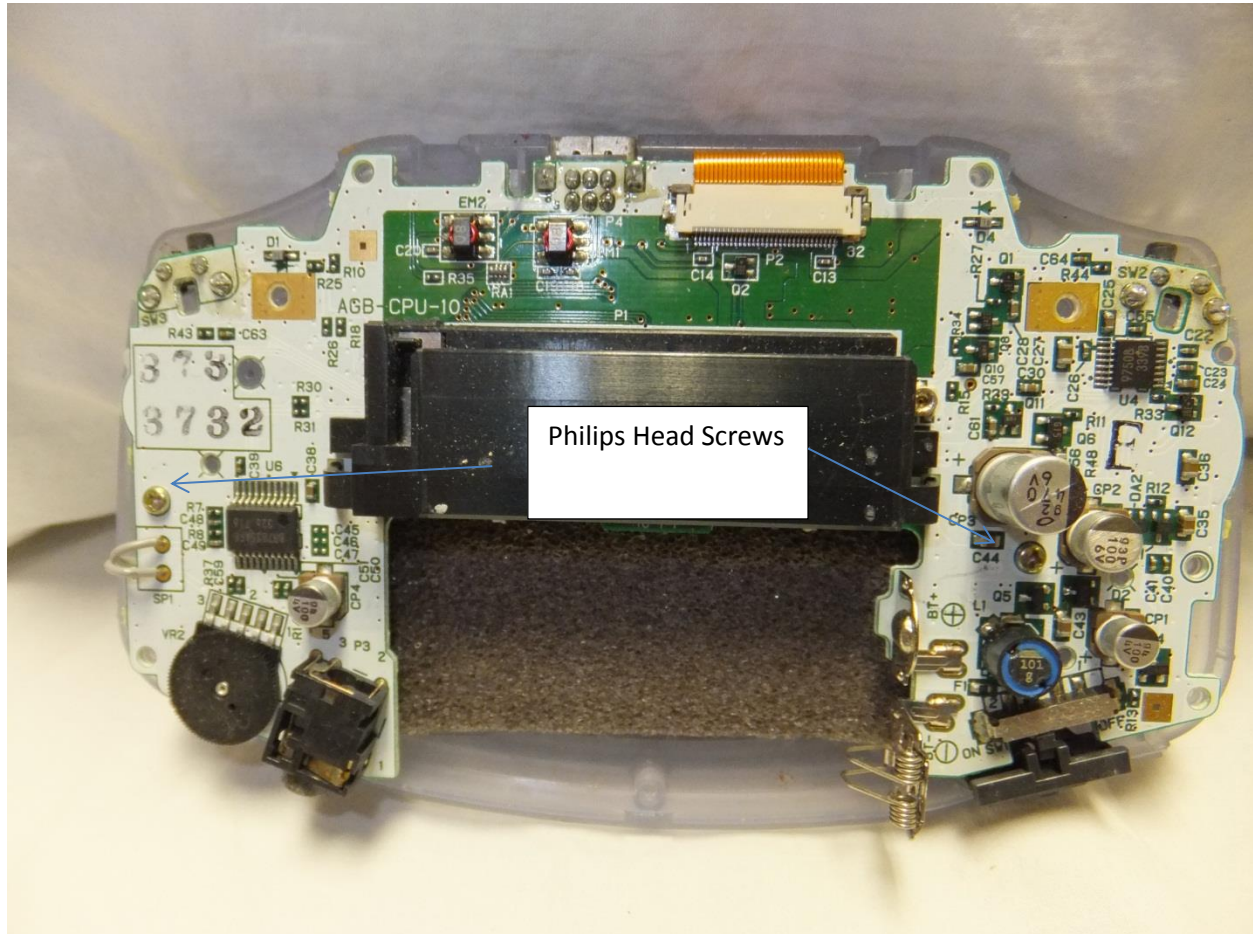


Picture One: Back side of GameBoy Advance unit

Once the screws are removed please separate the two halves of the GameBoy advance unit and proceed to step two.

**Step Two:**

Now that the back casing has been removed locate the two Philips head screws that are holding down the mother board and remove them.

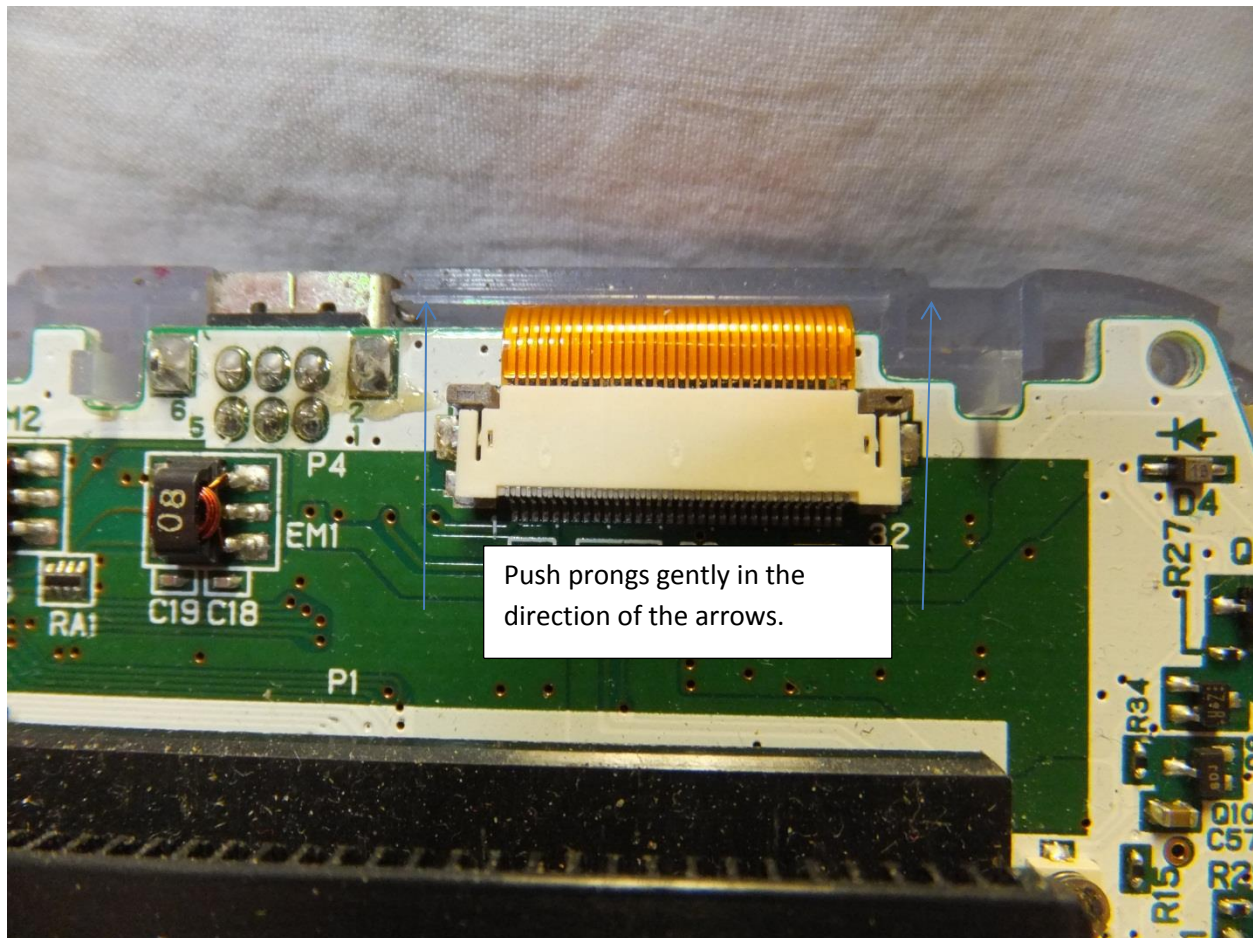


Picture Two: Mother board

Once the two screws are removed we need to disconnect the LCD screen cable that connects into the mother board. Please see step three.

**Step Three:**

In this step we need to unhook the LCD screen cable from the mother board. You will notice there are two prongs adjacent to the port where the ribbon cable inserts. These prongs need to be gently pushed upwards to unlock the cable from the mother board. Please exercise extreme caution as these prongs are very easy to break off. If you break them off you will have to replace the unit.



Picture Three: LCD Ribbon Cable

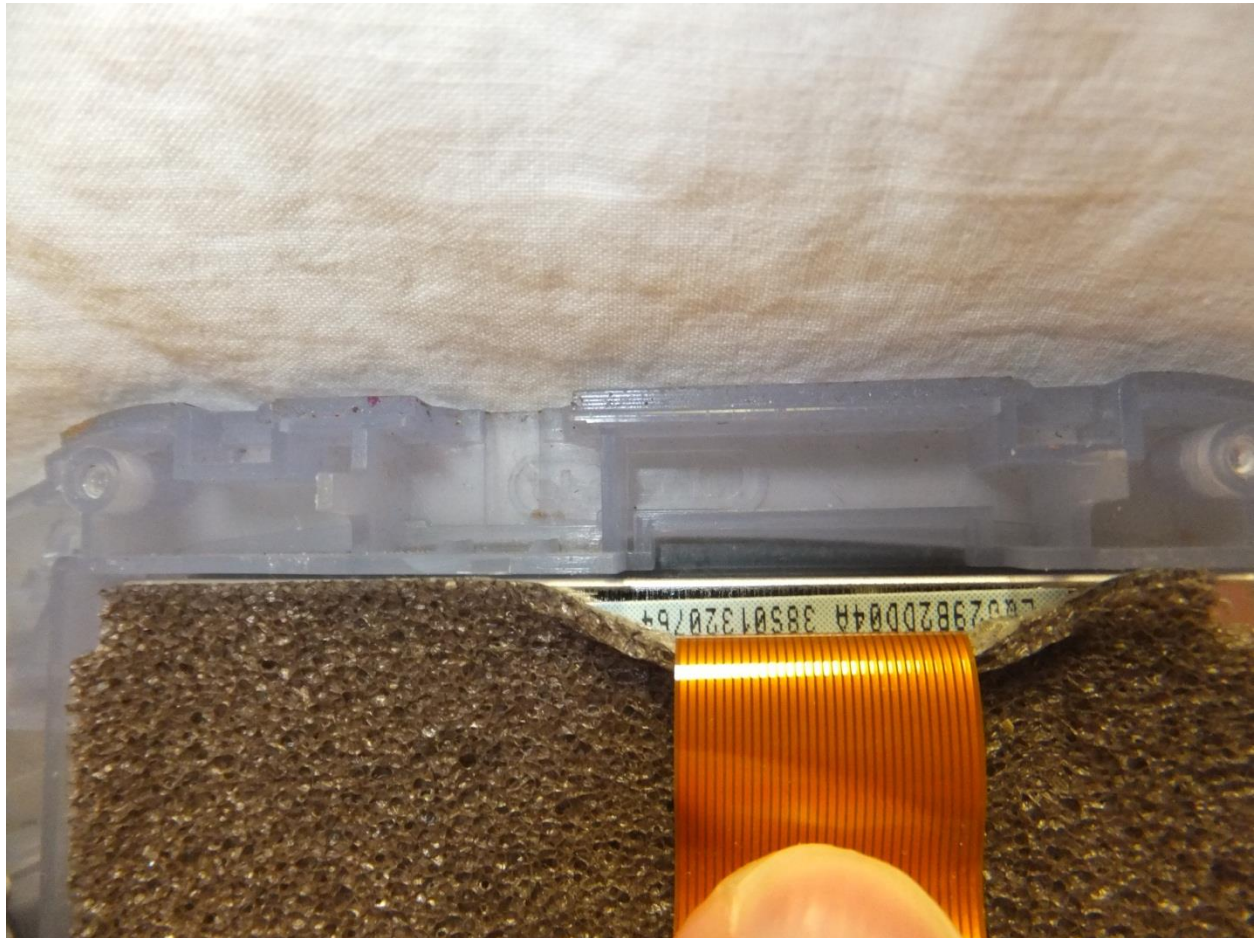
Once the ribbon cable has been removed from the port on the mother board, please remove the mother board and proceed to step four.



**Step Four:**

Now that the mother board has been removed it is time to remove the LCD screen itself. This step is easy to do, although care must be utilized or the LCD screen may be damaged. If the screen is damaged you will have to purchase a replacement, which are not inexpensive.

As seen in picture four below pull back the ribbon cable and locate the depression in the plastic mold behind it. Using a small flat head screw driver gently and carefully pry off the LCD screen from the casing.



Picture Four- Prying off the LCD screen

You will notice that the screen is glued to a black foam piece that may or may not come up with the screen. Try not to damage the foam piece as you remove the screen. You will need the sticky foam piece to reinstall the LCD screen.

**Step Five:**

At this time we recommend that you clean the rubber pads located underneath the plastic buttons, unless of course you purchased replacement ones, which is the ideal situation. The dirt and grime on the rubber pads can interfere with their normal functionality. Water and soap can be used. Please remove the existing screen protector at this time. Once the existing screen protector is removed we need to start the reinstallation process. To start attach the black foam piece to the front casing if it was separated when you removed the LCD screen.

As seen in picture five below that black foam has been placed so it does not extend beyond the borders of the case itself. Take some care to properly align the foam piece at this time.

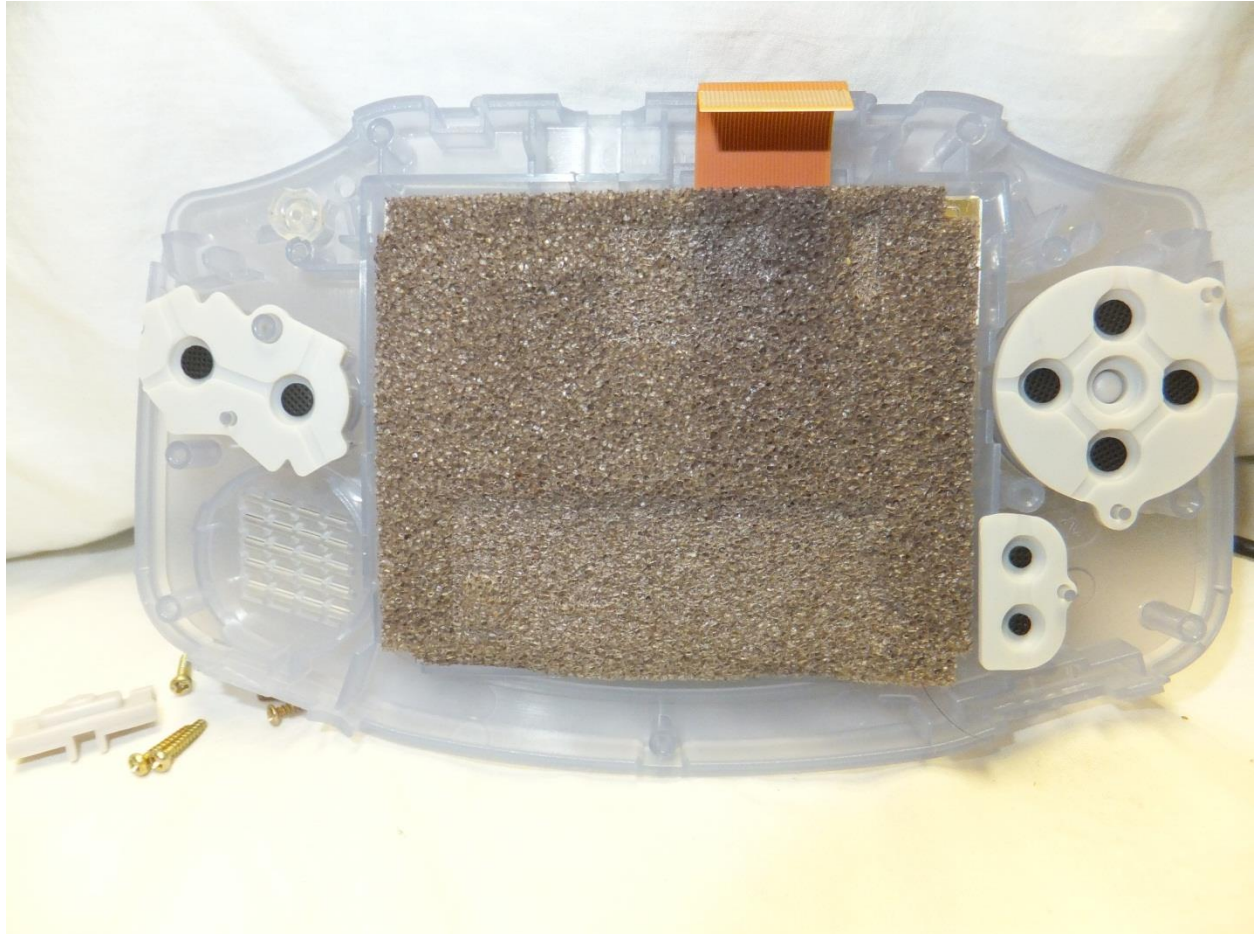


Picture Five: Proper placement of the foam piece

Once the foam piece has been installed please insert the LCD screen. It should fit easily into the hole. Do not proceed to install the screen protector yet. This is extremely important.

**Step Six:**

Now that the LCD screen is installed insert the plastic buttons and their associated rubber pads as seen in picture six below.



Picture Six: Making progress

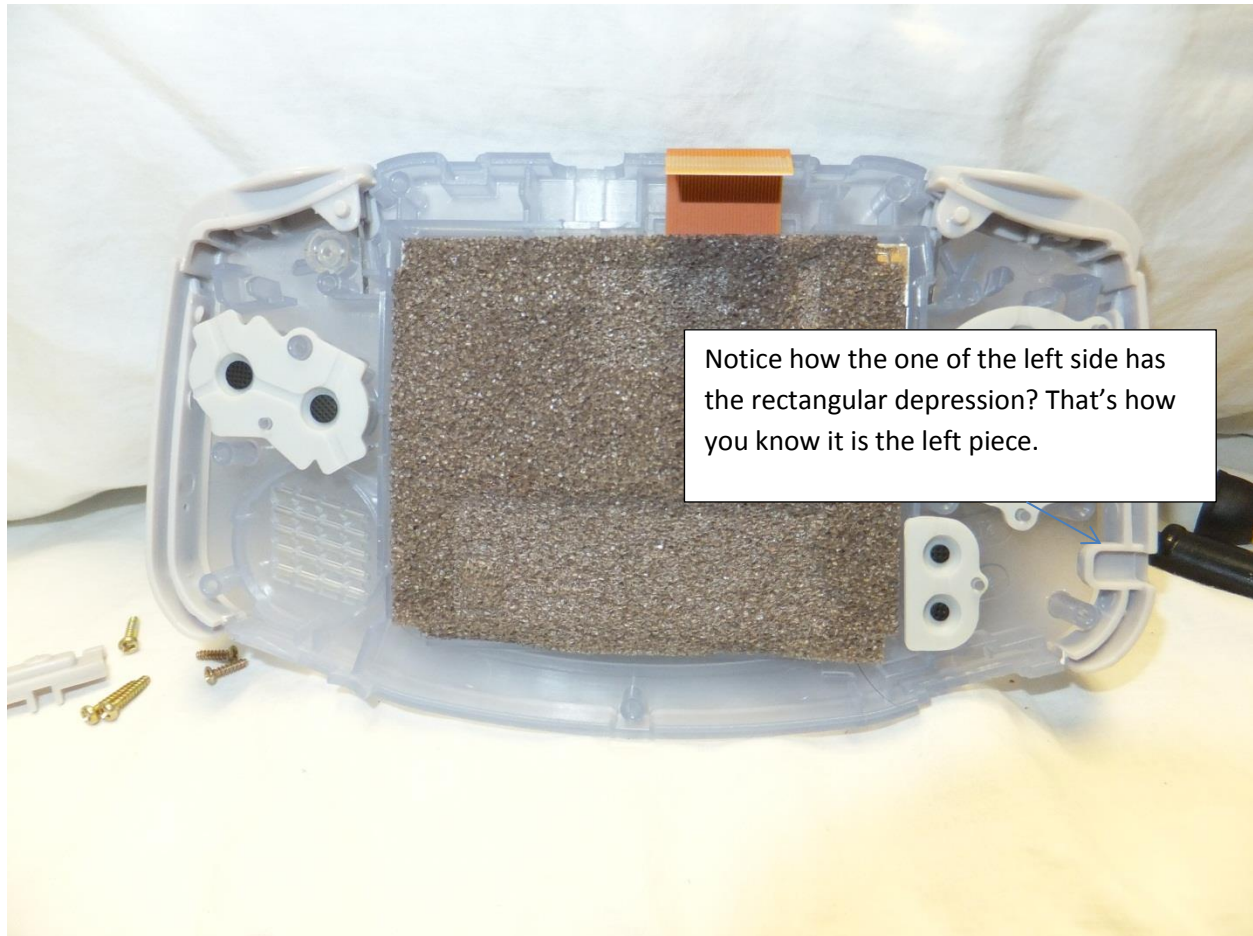
The next step is more difficult and requires a lot of patience. We recommend that you install the mother board at this time and do not attempt to install the shoulder buttons or the side plastic pieces. Installing the mother board is tricky because of the speaker unit. It is recommended that you insert the speaker first and then carefully install the mother board. The speaker wires are very fragile and if pinched may be broken; once broken they will have to be resoldered into place.

Once the mother board is installed make sure that the rubber pads are still in place. They can occasionally slip when installing the mother board; if everything looks good screw down the mother board using two Philips head screws.



**Step Seven:**

Now that the mother board is installed it is time to install the side plastic pieces and the shoulder buttons. The shoulder buttons should slip in, although this may require a few tries before it pops in. The side plastic parts are not universe and they need to be placed on the correct side. Please see picture seven below for guidance.



Picture Seven: Proper placement of the side plastic parts

Once the shoulder buttons are installed and the side plastic parts are in place hook up the LCD screen. Once you insert the ribbon cable into the port make sure to depress the prongs on both sides to lock the cable in place.

Once the ribbon cable is locked in place, screw on the back cover. Now that the system has been fully reassembled it is time to install the new screen protector. To start use the can of compressed air to spray off any dust or debris on the LCD. Even small particles of dust will be highly noticeable once the system is turned on. This is a time to be conservative and really give the screen a good cleaning with the compressed air. Please do not wipe the LCD screen with a cleaning cloth or any other material. The screen will scratch easily.



Once the dust has been removed remove the backing to the screen cover and install the cover. There is a semitransparent protective film on the front side of the screen protector that you also need to remove.

We hope that you enjoy your replacement GameBoy Advance screen protector. In the unlikely event that something doesn't work quite right after you install your replacement casing we have included a troubleshooting section at the end of this guide.

### **Troubleshooting Guide**

We are sorry to heart that something didn't go as planned; although hopefully we can help you correct the problem. Please select the problem that is most similar to the one that you are experiencing. If you have additional questions please contact us at [customerservice@mortoffgames.com](mailto:customerservice@mortoffgames.com)

**1. My LCD Screen Doesn't Work**

- a. Did you reconnect the LCD screen? If you did, are you sure that you locked it in place by depressing the prongs on both sides?

**2. My Sound Doesn't Work**

- a. The wires to the speaker were most likely damaged. They will be to be replaced. Soldering skills and equipment will be required.

**3. My Buttons Don't Work**

- a. The rubber pads could be worn out and need to be replaced.
- b. The rubber pads may not be properly aligned underneath the plastic buttons. Open the unit to refer proper placement
- c. There may be crude or grime on the rubber pads that is interfering with their normal operation. Washing them with soap and water should help.

**4. There is dust underneath the screen protector**

- a. Remove the screen protector and clean the LCD screen with a can of compressed air.